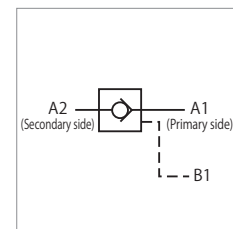
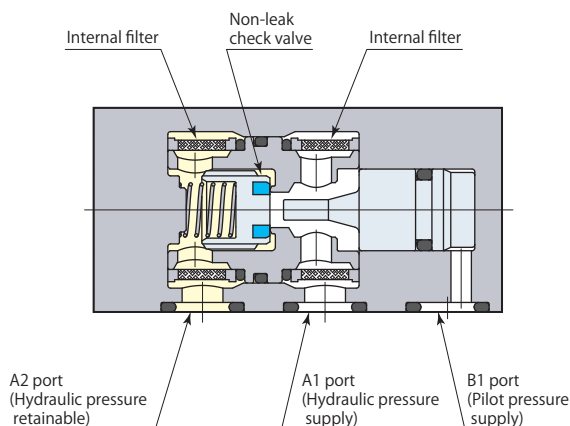




Pilot check valve model VCP



This is a non-leak pilot check valve, with which clamping circuit pressure can be retained over a long period of time after disengagement of hydraulic pressure source.

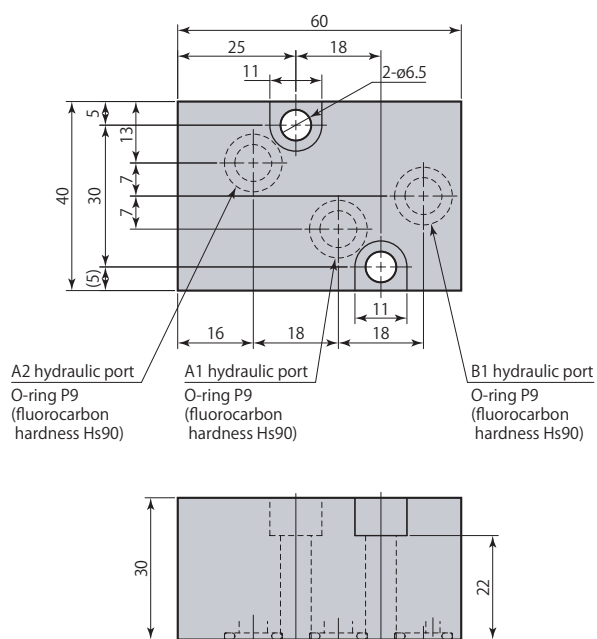
## Specifications

Model	VCP-LG	
Mounting, piping methods	Manifold mounting	
Pressure range	MPa	1–7
Proof pressure	MPa	10.5
Cracking pressure	MPa	0.019
Min. pilot pressure (open valve)	MPa	$0.01 + 0.24 \times \text{A2 hydraulic port (secondary side) pressure}$
Orifice area	mm <sup>2</sup>	14.2
Operating temperature	°C	0–70
Fluid used	General mineral based hydraulic oil (ISO-VG32 equivalent)	
Mass	kg	0.5

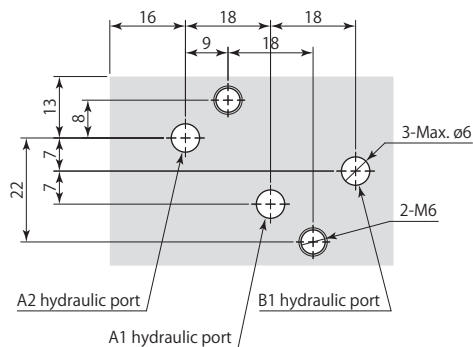
- Fluorocarbon has been adopted for seal sections where cutting fluid is applied, as a measure for the use of chlorine-based cutting fluid (this is not thermal resistant specification).

## Dimensions

### VCP-LG Manifold mounting \*With internal filter (A1 & A2 hydraulic ports)



### Mounting details



For manifold piping, the mounting surface finish must be no rougher than Rz6.3 (ISO4287:1997).

- Mounting screws are not included.
- This valve cannot be used in the circuit which pressure is applied to both of A1 and B1 port.